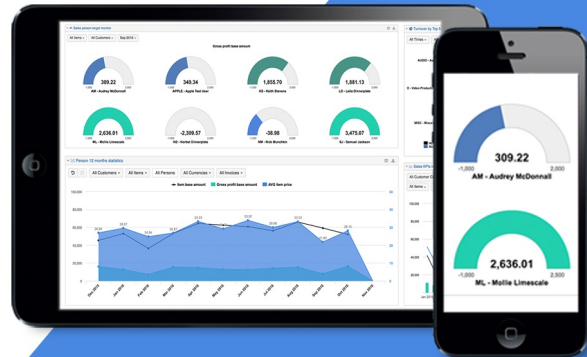




**Connect. Monitor. Motivate.**

- ✓ The best BI solution for HansaWorld StandardERP
- ✓ Data from different sources in one place, available from anywhere
- ✓ Display statistics, set goals, give context and unite your company



## Business dashboards made easy

flex.bi is a web-based business intelligence platform that makes creating and publishing business dashboards easy. To connect, monitor, analyze and explore growing data from multiple sources.

You can gather all your company data in one place, save time on manual data management, make decisions faster and motivate your team to reach targets in a more efficient way. flex.bi can be used to monitor overall company progress as well as for quick spotting of discrepancies and errors. Use it for retrospective analytics of previous performance, for up-to-date actual data monitoring and for future predictions about each and every KPI that matters for your company.

## How does it work?

We will connect data to flex.bi and help you build reports you need.  
30 days you can test all features and use our services for free.



## Growing together with your business

flex.bi is available in two versions: **Cloud** and **Enterprise**.

**Cloud** version is taken care of by flex.bi. You can create an account in our cloud, choose the most appropriate plan, connect to a data source and start using it in a matter of hours. It has all the features and flexibility but has its limits and might not be suitable for specific requirements, customization needs or very large amounts of data.

**Enterprise** is your private server installation that can be hosted in the cloud by us or on premise with your security requirements. It can be customized for your specific needs: new data source integrations, support for specific business processes or data structures.

### Reasons to consider your own flex.bi Enterprise business intelligence



Customize visual appearance



Dedicated server for your company



Build new integrations



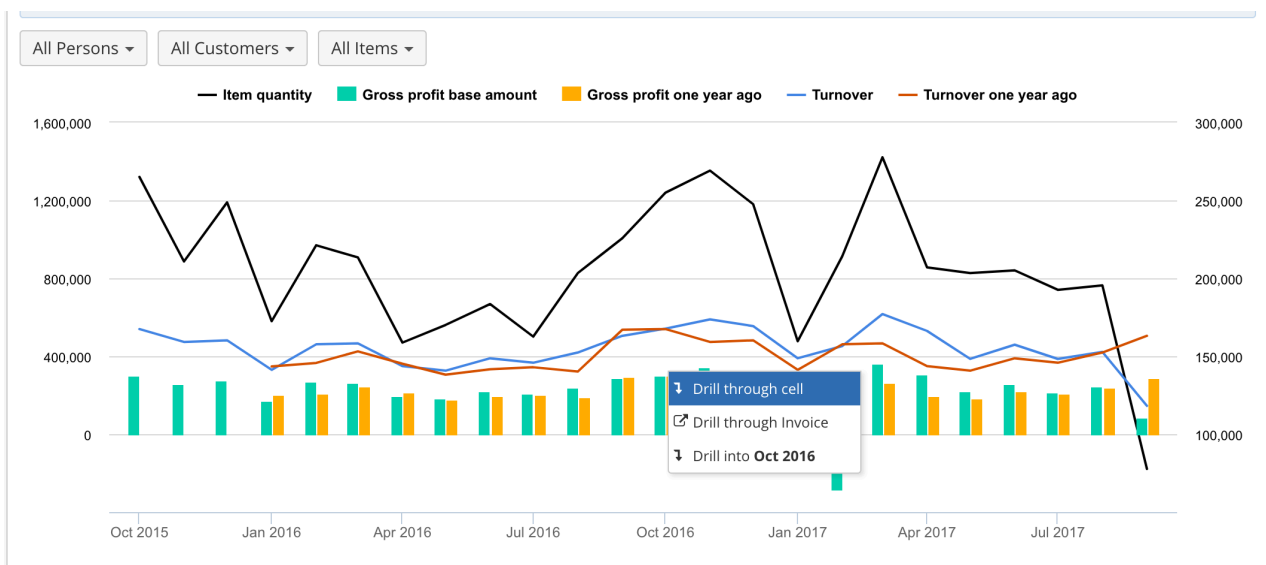
Powerful data processing

You can find information about flex.bi **Distributor** version and white label options in our webpage.

## Dynamic and flexible reports

flex.bi is a self-service BI platform - you can build and adjust reports with simple Drag & Drop and display the results in 8 different chart types. Use 4 types of Drill options, to see related data, share results in scheduled emails as PDF, export results to XLS or use embed function to create TV Wallboards.

Calculations in MDX give you freedom to implement more complex formulas for data selection.



## Find inspiration in the Report Template Library

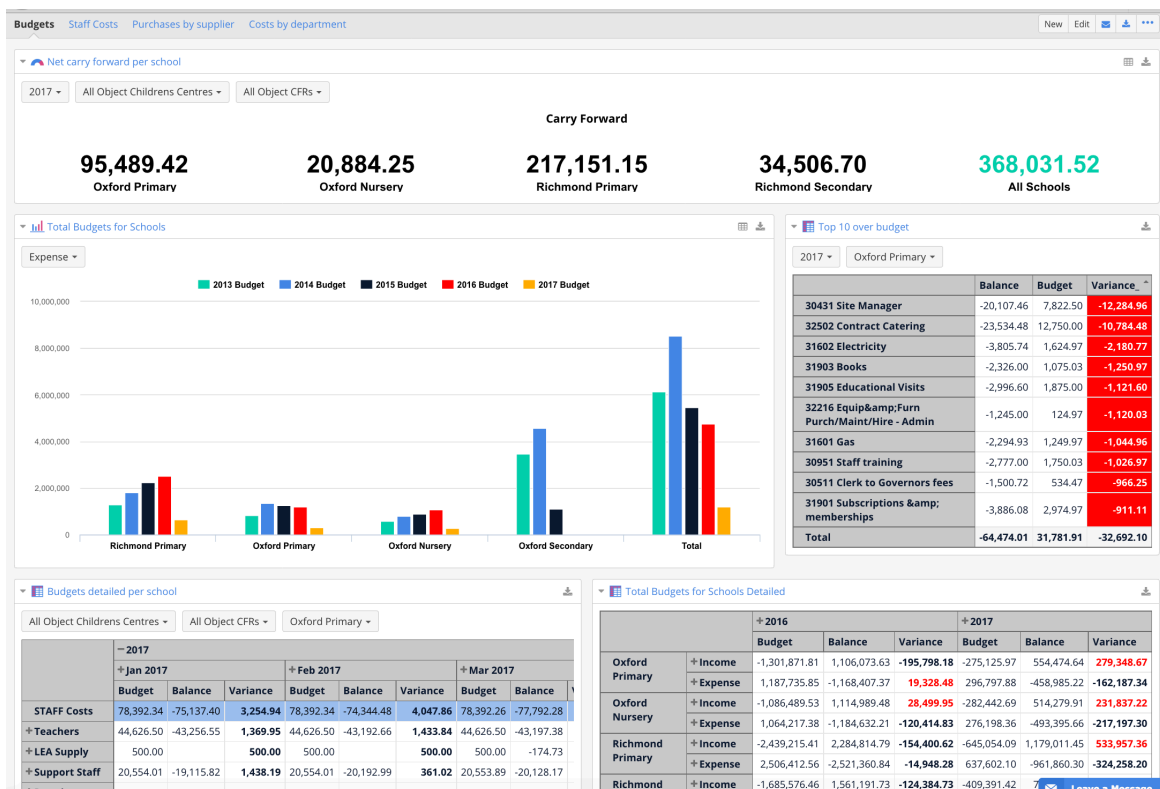
To make things easier, flex.bi offers a collection of dashboards in the Report Templates Library. You can choose the relevant reports depending on your data, industry, company profile and goal you are trying to reach, and transfer them to your Cloud or Enterprise account with your data in a couple of minutes. Templates are easy to adjust to your data and needs. If you decide to be a power user, you have full use of the Drag-and-Drop report building environment to create your own solutions and implement more complex algorithms.

Some of the most popular templates:

- **Sales analytics** - Your sales team performance overview in detail. Top items, top customers and other sales team activity boosters.
- **Budgets and target monitoring** - Automated real time budget control. Add target values on top of your ERP data from Excel or Google spreadsheets. A Google Spreadsheets template with detailed budget control options is available.
- **Trends and forecasts** - Predicting end of the month results for different departments and calculating trends of the future.
- **Product & Customer segmentation** - Discover profitable items and customers worth your attention.
- **Team competitions** - boost productivity of your team and make reaching goals more fun and engaging
- **Map charts** - display results on the map and use Geocoding to link customer addresses to longitude and latitude values automatically

## Financial consolidation

For multi company businesses we offer data consolidation options to see the big picture in one dashboard, as well as monitor in detail each company's individual performance.



## Multi Source Business Intelligence

flex.bi's specialty is the user-friendly and automated HansaWorld Standard ERP integration, but you also can build multi-source reports with data from other systems. Step by step data import applications are available for Rest API and SQL connections as well as JIRA issue tracking, Zendesk and other web services. The Excel and Google Sheets integration allows you to add budgets, targets and other important data stored outside any other system to see the whole picture in one place.

**Example:** To measure the success of the latest marketing campaign, you can compare the Sales Ledger from Standard ERP, Google Analytics data, and salesman activity from your Asterisk call central. To measure logistics efficiency you might combine item stock levels, data from warehouse management or logistics system and issues created in JIRA.

### Data Sources



HansaWorld  
Standard ERP

- Real time data with REST API connection
- Step by step application
- Integration for most of standard modules and registers
- Integration for custom modules and registers
- Reports available from Standard ERP personal desktop
- Standard ID login and user rights



Google Drive



Rest API



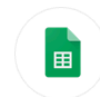
Google Analytics



Microsoft Excel



CSV



Google Sheets



Jira



Basecamp



GIT



Microsoft SQL



Zendesk



Highrise



Oracle



MySQL



Twitter



PostgreSQL

## HansaWorld Standard ERP integration

Our step-by-step data import application allows to connect your Standard ERP to flex.bi in less than an hour. Data relations and logic will be transferred to flex.bi, allowing you to focus on results in your reports rather than on source data.

flex.bi Cloud version supports integration for the Standard ERP Modules listed below. With Enterprise version you can add other modules and registers as well as develop connectors for other software you are using. Report Templates and Sample reports are available for all supported data cubes.

### HansaWorld integration



#### Financials analytics

You can visualize your Budget plan and compare it with Live Standard ERP data. Save time on manual data management. Personalized Profit and Loss reports and power of finance consolidation.



#### Customer relations (CRM)

Work with your Contact lists and Measure your customer satisfaction and plan actions based on results, NPS (Net Promoter Score). Calculate Customer and employee efficiency.



#### Project analytics (Job costing)

Focus on project budgets and be always on top of your expenses. Motivate your team to focus on budgets and plan future activities for each project.



#### Sales Reporting

Predict future trends and sales results at the end of the month. Monitor performance of each agent and measure if they reach the targets.



#### Stock analytics

Detailed Item reports by Location, Routes, variations as well as Classifications and objects. Stock turnover report will help you to see the progress.



#### POS

Measure performance of each Shop and publish results on monitors to motivate your shop team. Communicate also targets of your company in general.



#### Sales Orders

Combine Sales orders data together with other module data to see the big picture of your customer activity, predict orders to your suppliers.



#### Quotations

Analyse your pipeline and plan your sales based of Quote statuses. Implement fact based thinking not guessing.

## Data connectors for HansaWorld product line

For Standard ERP users there are 3 data connection options available. Import frequency, company selection, extra dimensions and other options can be specified in the data import application.

- **Rest API connection** - ensures direct connection with Standard ERP. Requires Standard ERP version 8.1 or later.
- **HansaWorld source files import** - controlled by a HAL package of prescheduled exports of HansaWorld (.txt) files and a Script that imports data.
- **Combined method** - supports both types of HansaWorld data connectors simultaneously. The import type can be defined for each register or setting.

## Sharing is caring

Each person, depending on their position in the company and their habits, can choose the most suitable option for them to access flex.bi reports and dashboards.

- **Dashboards in email subscription** - receive up to date numbers as a PDF file attachment on your chosen schedule. Can be used as a reminder for those who need to see reports periodically.
- **Embed reports and dashboards** in other software and web pages as an iframe. User access tokens allows to generate sharable links that can be seen without user login, while still controlling Drill down options and data refresh frequency.
- **Export report results** - export what you see on the screen to Excel, PDF or CSV file for filing or further investigation.
- **TV Dashboards** - communicate goals and progress on Wallboards around your office, warehouse or production environment. All you need is a Smart TV and flex.bi will do the rest.
- **Mobile friendly** interface allows flex.bi to be used on your touchscreen devices.



**DASHBOARD PUBLISHING WITH FLEX.BI**

Dashboard in web browser    TV Screen - Wallboard    Dashboard in email (PDF)    Phone or tablet users

The banner features a dark teal background with white text. On either side of the central text are icons of a computer monitor displaying a dashboard with a pie chart and a list of items.

## User rights & data access roles

Each flex.bi account contains a set of data that can be analyzed by one or more account users.

**User rights** define the access level for each user: Owner, User admin, Data admin, Reports admin, User or Dashboard viewer. For example, Data admin can setup the data connections, User admin can add new users, but Dashboard viewer cannot modify existing reports or create new ones.

**Data access roles** are great for limiting the scope of data that can be accessed by each user, ensuring that they see only the data relevant to them. For example, warehouse operatives shall have an overview of Stock dashboards, project managers shall have an overview of their projects only, but company owners should be able to navigate through all dashboards. You can limit access to a single report, folder, or dashboard, as well as data cube (Financials, CRM, Sales, etc) or dimension members (object, classification, person etc.)

## Customer Stories



With the help from flex.bi the management is always keeping hand on the pulse about company's direction and budget implementation. We have introduced united standard in all companies of the group and have saved a lot of time. Actual results are always available and help us make decisions promptly.

”

**Inese Burnicka-Muizniece, Head of Financial and Legal division, Cleanhouse**

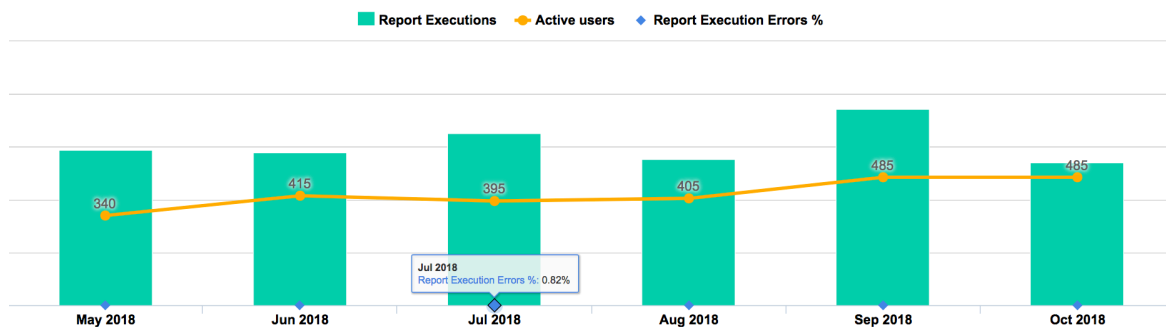
## Speed

Data is alive and constantly changing. Our goal is to deliver real time answers in the shortest time. We use efficient data connectors and OLAP cube technology to achieve that. The database stores all the possible combinations of answers that are calculated during the data import. This allows you to quickly access the relevant data.

**Quick setup. Easy to use.**

## Security, technology and server maintenance

- flex.bi is built with the Ruby on Rails framework which includes standard countermeasures for common web application security threats, such as cross-site scripting, and the framework also ensures session security.
- Each flex.bi web request is authenticated and authorized ensuring that each user can only gain access to the accounts where they have permissions to do so.
- Hackers from <https://www.hackerone.com/> are testing flex.bi platform security vulnerabilities.
- To monitor user activity and reporting speed, we have created a **Usage statistics Dashboard** that allows each system administrator to track errors and discover potential issues on their server.



## Server requirements for Enterprise version

### Software

- flex.bi Enterprise installation is supported on Mac OS X, Linux and Windows.
- Java SE 7 or Java SE 8 should be installed.
- MySQL (version 5.x), PostgreSQL (version 9.x), MS SQL (version 2008 or later) and Oracle (version 11g or later) are supported as a private flex.bi database.

### Hardware

It is important to have enough RAM on the server to cater for the needs both of the flex.bi server (the java process) as well as MySQL or other SQL caching needs. For larger setups, the minimum suggested amount would be 2GB RAM for the java process and 4GB for the MySQL process.

To leverage the feature of parallel import threads to improve import speeds, it is important to have as fast and as many CPU cores as possible. For larger installations, we suggest the AWS configuration c4.2xlarge with 8 CPU cores, which safely allows the import of data with 5 or 6 import threads in parallel.

## Customer Stories



flex.bi is the best BI tool to perfectly have your data from different Standard ERP modules and other systems in one view. The drill down functionality is wonderful.

”

**Norman Mouton, CTO**



flex.bi saves me hours of time in manually exporting reports into excel and creating reports and dashboards. Drag and drop interface makes it easy to understand and create complex reports in minutes. The cube structure to data allows one quick access to large data sets. Always willing to work together to solve a problem if it will further develop the system.

”

**Alan Harper, CFO**

## Your personal business assistant

“ *Powerful tool tailored to my business needs. I love being on top of things and want my employees also to be aware about my expectations. We are flex.bi customer for 4 years already and it is growing together with us.*

Kaspars Skribanovskis, CEO, Rolling



Flex BI Ltd  
Maza Nometnu street 47, Riga, LV-1002, Latvia  
E-mail: [support@flex.bi](mailto:support@flex.bi)  
Web: <http://flex.bi>  
Skype: flexbi.support



**APPLY FOR FREE 30 DAY TRIAL**